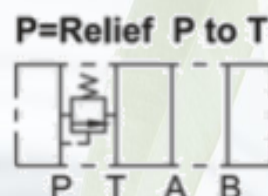
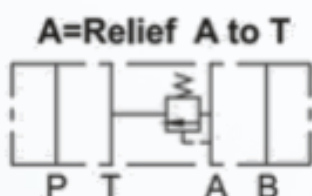


Modular Relief Valve

NG10 (Cetop 5)

MR-03A-3-50, MR-03B-3-50, MR-03P-3-50



- The MR-03 modular relief valves can be used to efficiently restrict the "A" port, "B" port, or "P" port or the pressure from "A" and "B" port to the oil tank.
- The mounting surface is NG10.
- Pressure adjustment: 10-250 bar.

Max. flow L/min.	Max. pressure bar	Connecting port	port
80	315	3/8"	A = Relief A to T
80	315	3/8"	B = Relief B to T
80	315	3/8"	P = Relief P to T