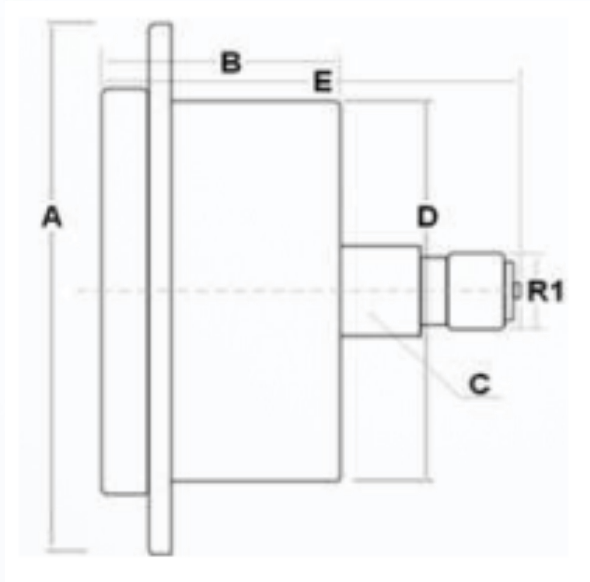


Pressure gauges

Vertical connection with glycerin (1/4" BSP)



| Type | R1 | Scale (bar) |
|-------|----------|-------------|
| 90052 | 1/4" BSP | 0-40 |
| 90054 | 1/4" BSP | 0-100 |
| 90056 | 1/4" BSP | 0-250 |
| 90058 | 1/4" BSP | 0-400 |

| Accuracy | Dimensions | Temperature | Material |
|----------|--------------------------------------|-------------------|---|
| 1.6% | A = 83 B = 29 C = 14 D = 62 | -10°C up to +60°C | Case: stainless steel 304 Ring: stainless steel 304 Window: polycarbonate (glass) Socket & connection: brass |