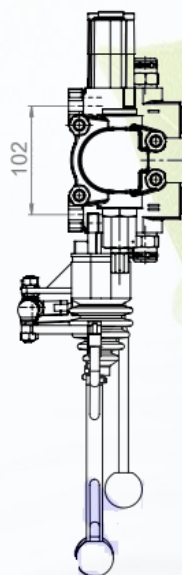
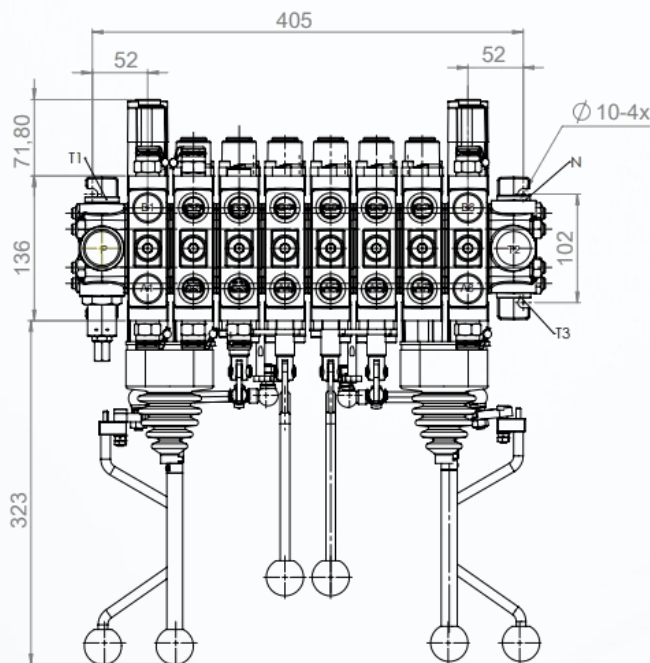
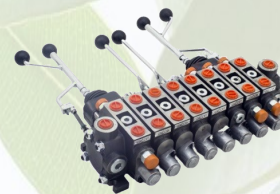


8ZC70 Series Valves with 3-Axis Joysticks



N2-G1/2

ZC70 L12(AyBy)G
ZC70 PA1(AyBy)G
ZC70 PAV1c(AyBo) G

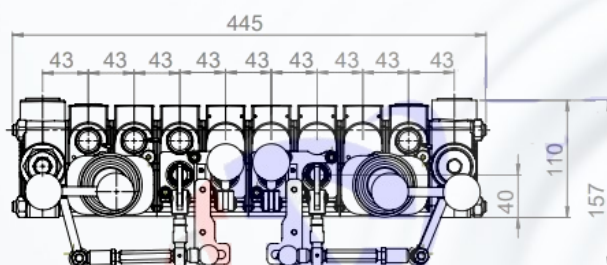
js4+3

ZC70 PAV1G-J
ZC70 PAV1G-J

ZC70 PAV1c G
ZC70 PA1G
ZC70 L12(AyBy)G

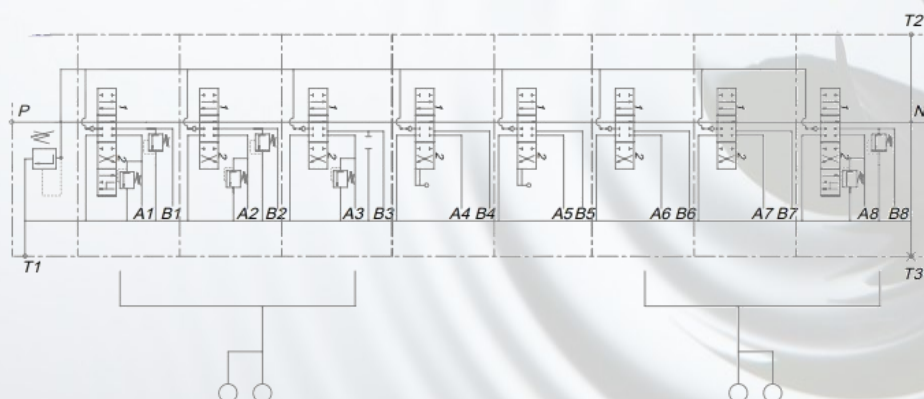
js4+3

T2-G1/2



Nominal flow rate: 70 l/min
Operating pressures:
@ port P - 250 bar
@ port A, B - 300 bar
@ port T - 50 bar

Port threads:
Port P - BSP G 1/2"
Port A, B - BSP G 1/2"
Port T2 - BSP G 1/2"
Port T1, T3 - BSP G 3/4"
Port N - M26x1,5 (plugged by default)



TAON

Hydraulik Komponenter

TAON Hydraulic Components ApS are specialists in hydraulic solutions, components and tools.

• +45 24 48 84 80 • info@taon.dk • www.taon-hydraulic.com

© TAON Hydraulic will always help you find the best solution.