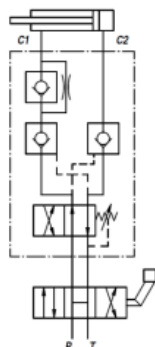


Plough overturning valve

Double acting
VRAP



APPLICATIONS: Connect C1 to the cylinder's stem, C2 to the block, P and T to the machine inlet. Thanks to its shape, it can be in-line assembled on a hydraulic cylinder or directly fixed on the plough through the threaded hole made on the body.

USE AND OPERATION:

This valve has been realised for use on cylinders for reversible plough to obtain the automatic oil backflow and therefore the motion reversal of the hydraulic cylinder that makes the plough rotating. It is provided with a double pilot check valve which guarantees high safety and enables to put and block the cylinder in any position. The motion reversal of the piston is made through a differential type relief valve exactly in the dead point of the plough, generating more power and speed. It can be assembled on heavy and unbalanced plough with the following internal diameters: 40/50, 60/80, 80/100, 100/110, 110/130 mm.

MATERIALS AND FEATURES:

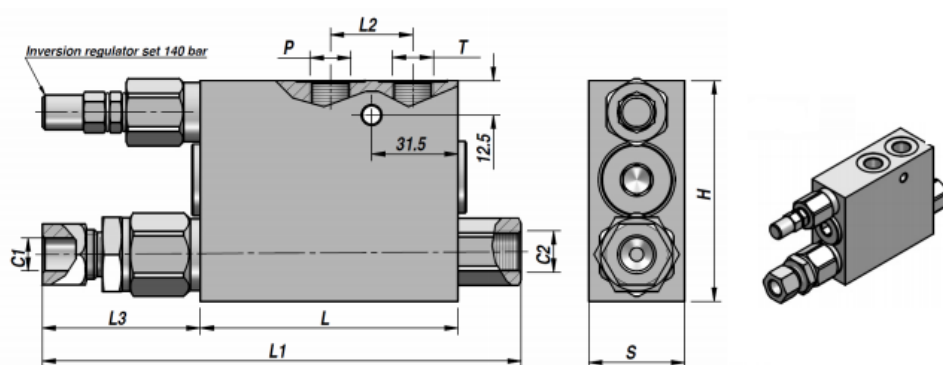
Body: zinc-plated steel

Internal parts: hardened and ground steel

Seals: BUNA N standard

Poppet type: any leakage

These valves are supplied with exchange pressure at 140 Bar: according to your requirements, pressure setting can be modified by acting on the pressure regulator.



Type	P - T	C2	C1	Inversion pressure Max. Bar	P Max. Bar	L	L1	L2	L3	H	S	Weight
	BSP	BSP				mm	mm	mm	mm	mm	mm	kg
VRAP 40/50	3/8"	3/8"	Ø12	250	400	94	176	30	58	80	35	2,13
VRAP 60/80	3/8"	3/8"	Ø12	250	400	94	176	30	58	80	35	2,14
VRAP 80/100	3/8"	3/8"	Ø12	250	400	94	176	30	58	80	35	2,14