

Modular pilot operated check valves

NG06 (cetop 3)

MPC-02-W50-50-D

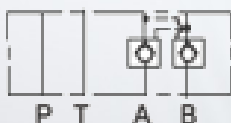


The MPC-series modular pilot operated check valves can be used for A port or B port respectively, or A port and B port jointly in a hydraulic system.

The mounting surface is NG06 (CETOP 3).

Hydraulic diagram

W= A & B Port



Max. Flow L/ min	Max. pressure bar	Port
60	315	A&B Port