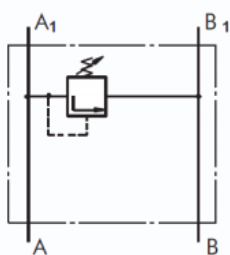


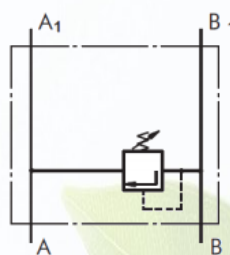
Hydraulic valve

Cross-over relief valve

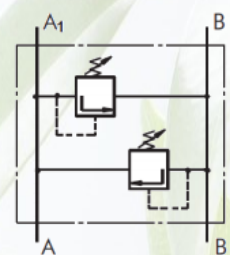
KPER—KPDR—KPES—KPDS



Single Crossover
Relief Valve
type KPE ...



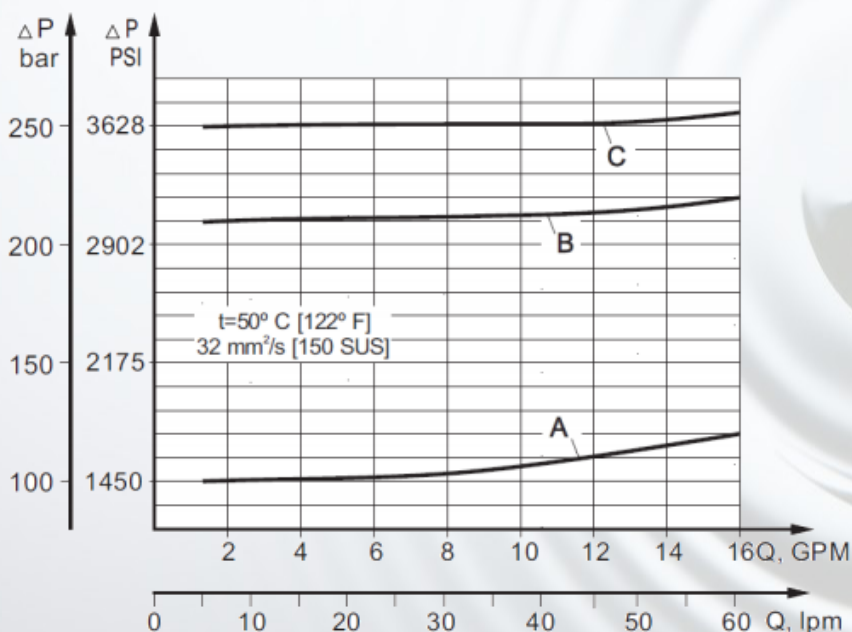
Single Crossover
Relief Valve
type KPE ...



Dual Crossover
Relief Valve
type KPD ...

Parameters	Type			
	KPER	KPDR	KPES	KPDS
Flow Rate , lpm [GPM]	60 [15.85]			
Pressure Range* , bar [PSI]	30 ÷ 100; 50 ÷ 210; 80 ÷ 300 [435÷1450]; [725÷3050]; [1160÷4350]			
Weight , kg [lb]	1,55 [3.42]		1,50 [3.31]	

*Pressure Settings are at flow rate of 5 lpm [1.32 GPM] and viscosity 32 mm²/s [150 SUS] (50°C [122°F]).



Rated Pressure

A 100 bar [1450 PSI]

B 210 bar [3050 PSI]

C 250 bar [3625 PSI]



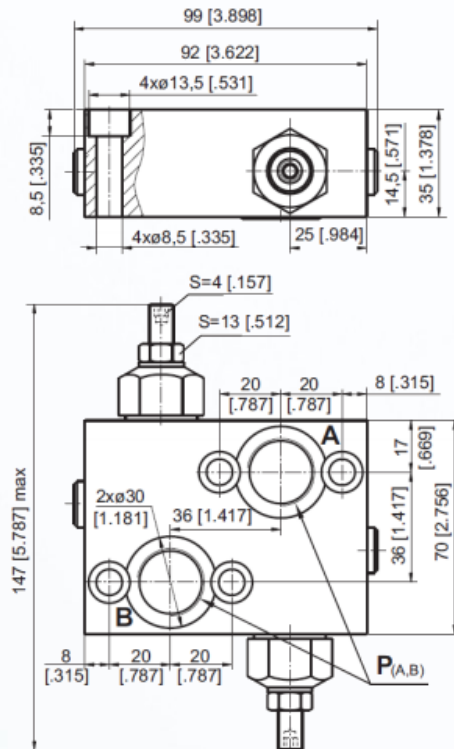
TAON Hydraulic Components ApS are specialists in hydraulic solutions, components and tool.

TAON Hydraulic Components ApS • +45 24 48 84 80 • info@taon.dk • www.taon.dk

© TAON Hydraulic will always help you find the best solution.

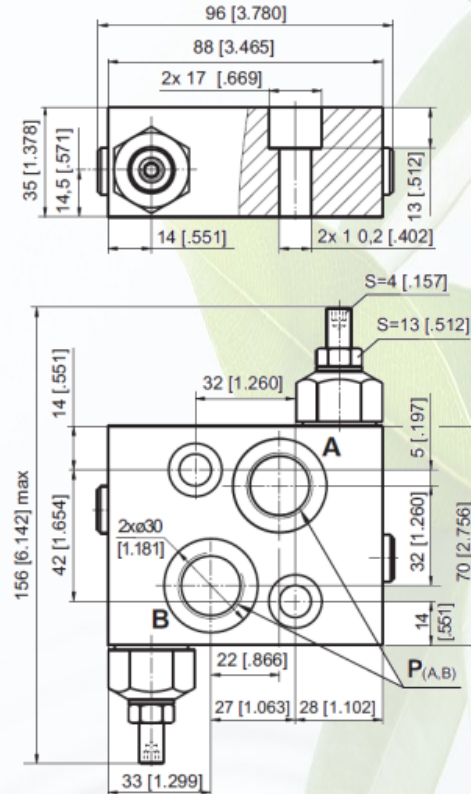
VALVES FOR MP, MR, MH HYDRAULIC MOTORS

DUAL VALVE KPDR

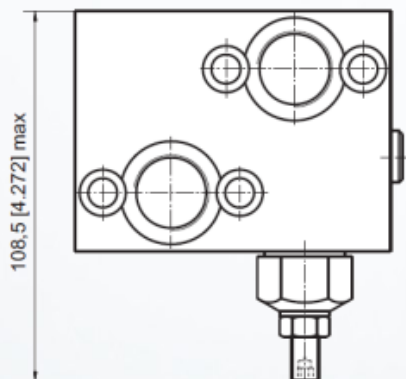


VALVES FOR MS HYDRAULIC MOTORS

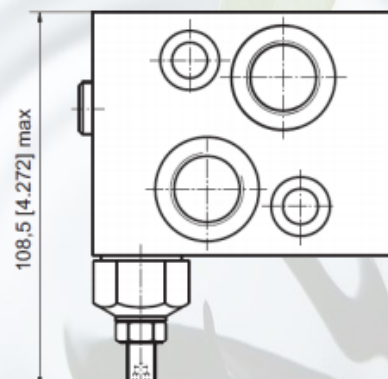
DUAL VALVE KPDS



SINGLE VALVE KPER



SINGLE VALVE KPES



Hydraulic valve

Cross-over relief valve

KPER – KPDR – KPES – KPDS



mm [in]

	Thread Ports - P (A,B)
-	G1/2 20 [.79] depth
M	M22x1,5 20 [.79] depth
A	7/8 - 14 UNF O-ring 20 [.79] depth

Note:

KPDR and KPER Blocks are installed directly on MP, MR and MH Motors with four screws M8x35 - 8.8 DIN 912 or 5/16-18 UNC, 1.5 long ANSI B 18.3. Tightening torque 2,0^{+0.5} daNm [177⁺⁴⁴ lb-in].

KPDS and KPES Blocks are installed directly on MS Motors with two screws M10x35 - 8.8 DIN 912 or 3/8-16 UNC, 1.5 long ANSI B 18.3. Tightening torque 3,5 daNm [310 lb-in].

TAON

Hydraulik Komponenter

TAON Hydraulic Components ApS are specialists in hydraulic solutions, components and tool.

TAON Hydraulic Components ApS • +45 24 48 84 80 • info@taon.dk • www.taon.dk

© TAON Hydraulic will always help you find the best solution.