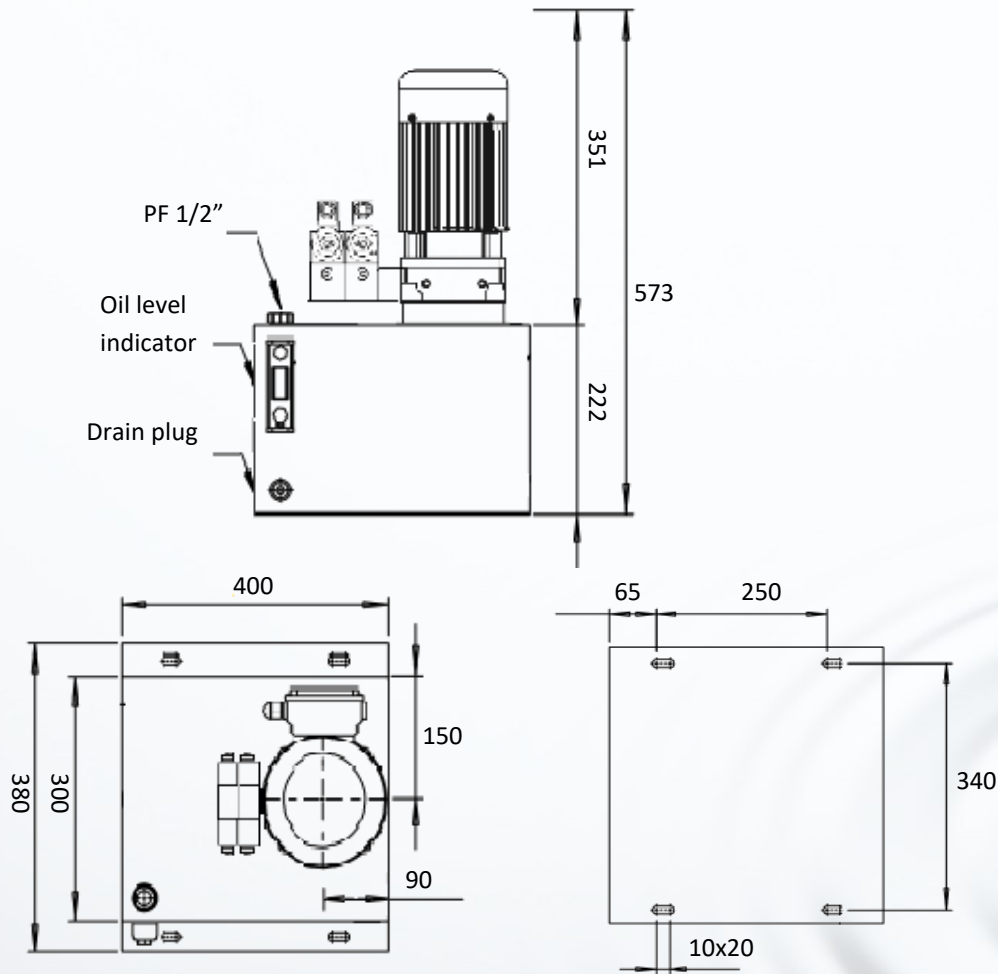
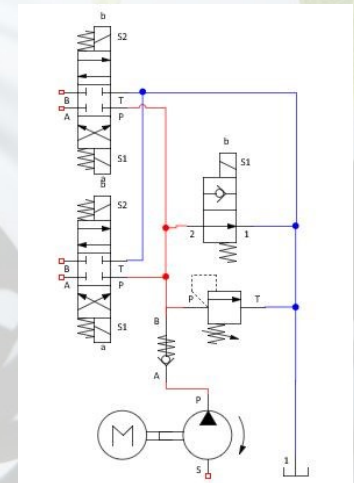


MPP-40 Mini Power Pack with 2x double acting valves, including by-pass valve



Hydraulic Circuit

All the ports are G 3/8
24 VDC spools



ELECTRIC MOTOR

Power: 3 kW
Voltage: 220/400 VAC

PUMP & OIL TANK

Pump displacement: 3,2 cc/rev
Tank Capacity: 25 liter square tank

MAX. PRESSURE

P: 175 bar

FLOW

8,5 L/min