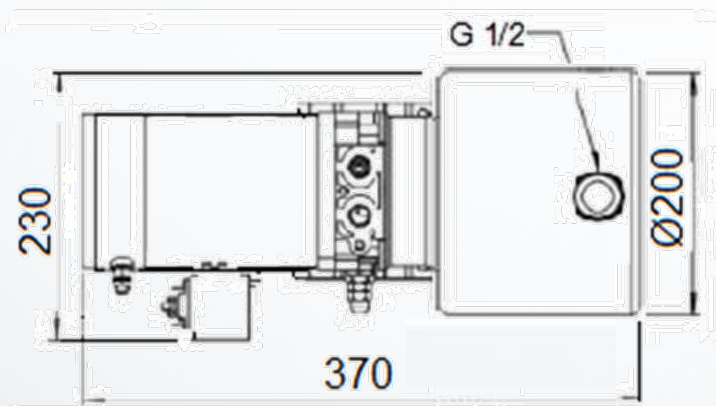
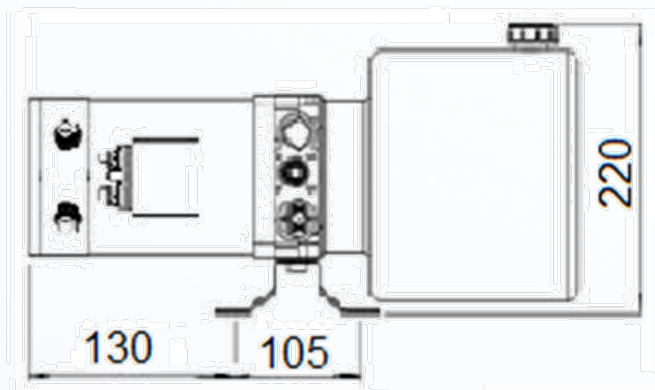


MPP-32 Mini Power Pack - Single acting

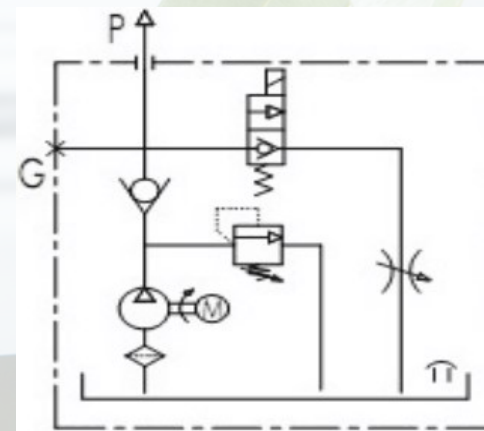


INCLUDED:

- Single acting function
- Thermal protection
- Relay
- Foot bracket / mounting bracket
- Electric controller with 2,5 m cable
- CE - Declaration of conformity

The 24V DC single-acting power pack is suitable for all single-acting applications and ideal for use in the following applications:

- Tail Lift
- Trailer/Tipper
- Hand-operated lift stacker
- Scissor-lift platform
- Aerial platform



ELECTRIC MOTOR

Power: 2,2 kW
Voltage: 24 V DC

PUMP & OIL TANK

Pump displacement: 3,15 cc/rev
Tank Capacity: 4 liters, cylinder, horizontal

MAX. PRESSURE

P: 135 bar

FLOW

8,3 L/min

HYDRAULIC CURCUIT

Port 3/8" BSP

