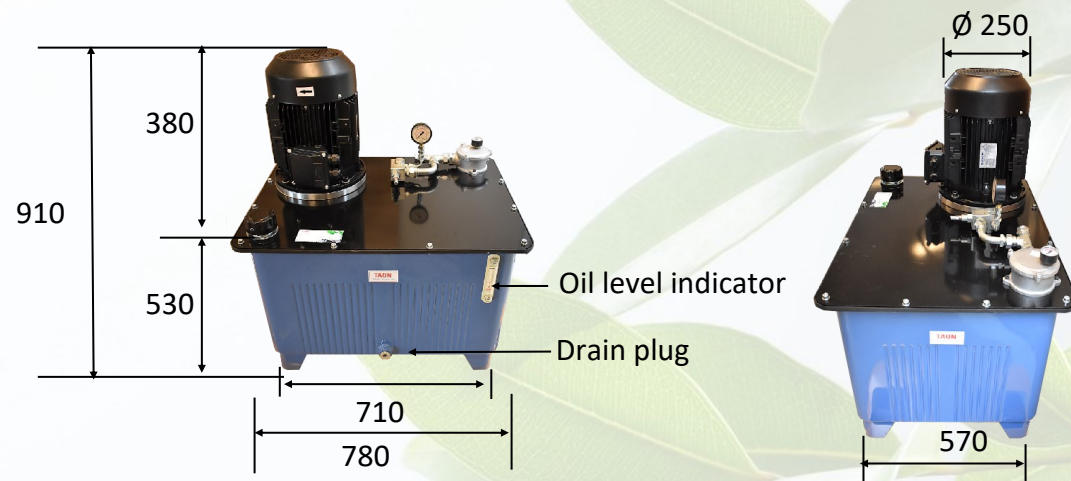


# HPU-17 High/Low Hydraulic Power Unit



This Hydraulic Power Unit comes with a double pump at 8+8 cm<sup>3</sup> with high/low function.

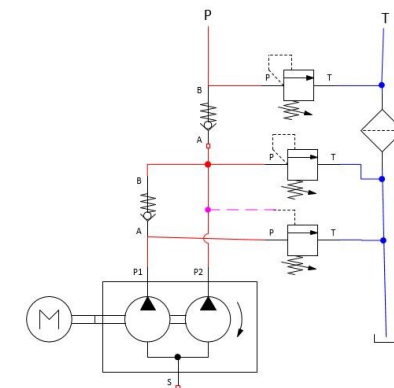
Flow at 0-140 bar - 24 L/min

Flow at 140-250 bar - 12 L/min.

## Hydraulic Circuit

P = 1/2"

T = 3/4"



### ELECTRIC MOTOR

Power: 5,5 kW

Voltage: 400/690 V AC

3-phase

### PUMP & OIL TANK

Pump displacement: 8+8 cc/rev

Tank Capacity: 160 liter square tank

Returnfilter 10 µm

### MAX. PRESSURE

P: 250 bar

### FLOW

24,0 L/min at 50 HZ

**TAON**

Hydraulik Komponenter

TAON Hydraulic Components ApS are specialists in hydraulic solutions, components and tool.

TAON Hydraulic Components ApS • +45 24 48 84 80 • info@taon.dk • www.taon.dk

© TAON Hydraulic will always help you find the best solution.