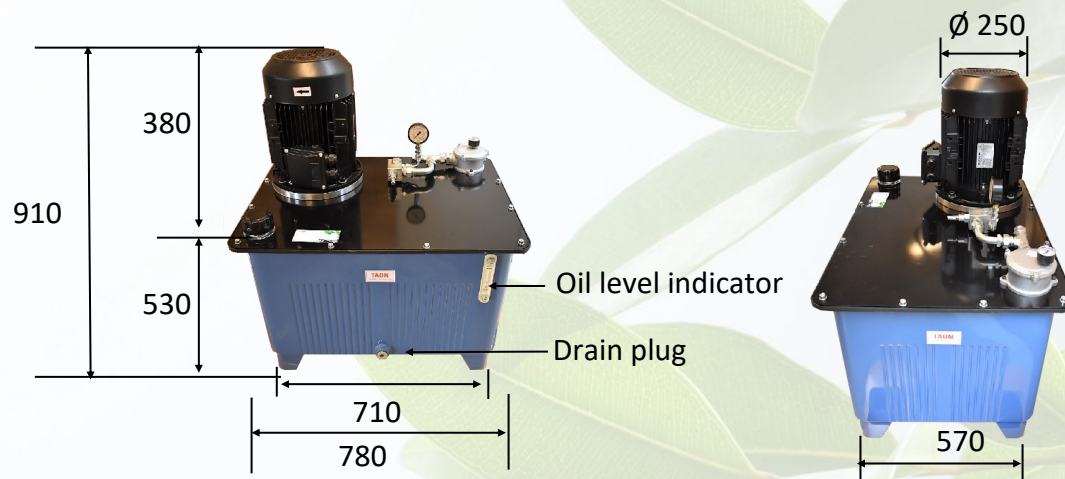


HPU-15 High/Low Hydraulic Power Unit



This Hydraulic Power Unit comes with a double pump at 11+14 cm³ with high/low function.

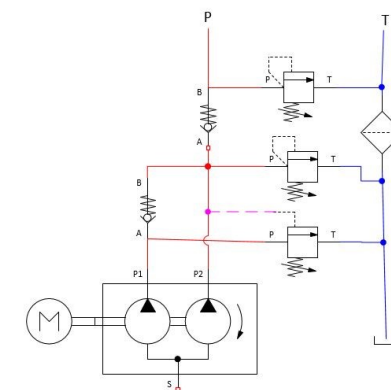
Flow at 0-90 bar - 36 L/min

Flow at 90-210 bar - 15,5 L/min.

Hydraulic Circuit

P = 1/2"

T = 3/4"



ELECTRIC MOTOR

Power: 5,5 kW

Voltage: 400/690 V AC

3-phase

PUMP & OIL TANK

Pump displacement: 11+14 cc/rev

Tank Capacity: 160 liter square tank

Returnfilter 10 µm

MAX. PRESSURE

P: 210 bar

FLOW

36,0 L/min at 50 HZ



TAON Hydraulic Components ApS are specialists in hydraulic solutions, components and tool.

TAON Hydraulic Components ApS • +45 24 48 84 80 • info@taon.dk • www.taon.dk

© TAON Hydraulic will always help you find the best solution.