

HPU-1 Variable Hydraulic Power Unit



ELECTRIC MOTOR

Power: 5,5 kW
Voltage: 400/690 V AC

FILTER & OIL TANK

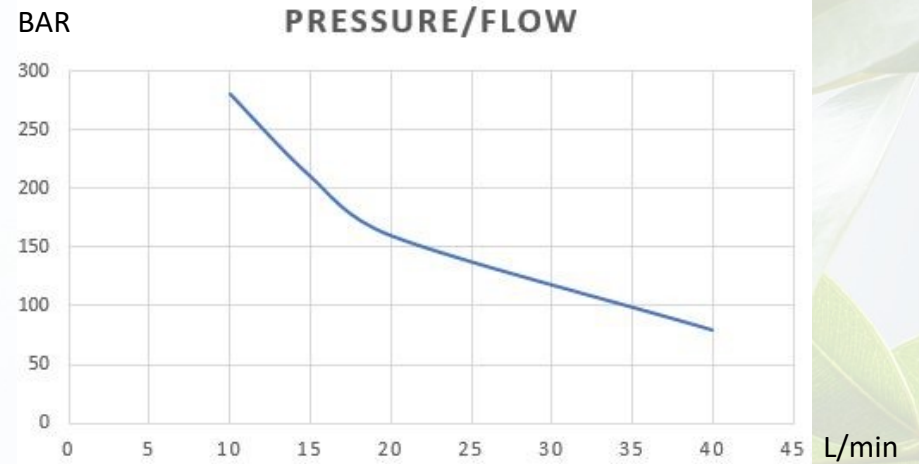
Returnfilter 10 mic.
Tank Capacity: 70 liter

MAX. PRESSURE & FLOW

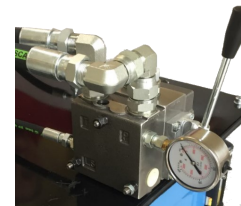
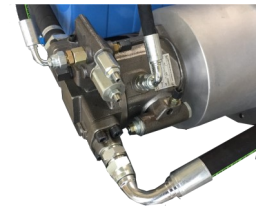
Pressure: Up to 290 bar
Flow: Up to 40 L/min

SIZE

Length: 1200
Width: 800
Height: 800



Variable Piston Pump: A10VSO28 DFLR/31R
disp.: 28 cc/rev.
Load Sensing controlled, Torque Limited.



Hydraulic valve: Standard PV-140, 1 section.
Proportional valve with LS-signal.
As additional, the Valve can be setup after customer requerments.

TAON

Hydraulik Komponenter

TAON Hydraulic Components ApS are specialists in hydraulic solutions, components and tool.

TAON Hydraulic Components ApS • +45 24 48 84 80 • info@taon.dk • www.taon.dk

© TAON Hydraulic will always help you find the best solution.