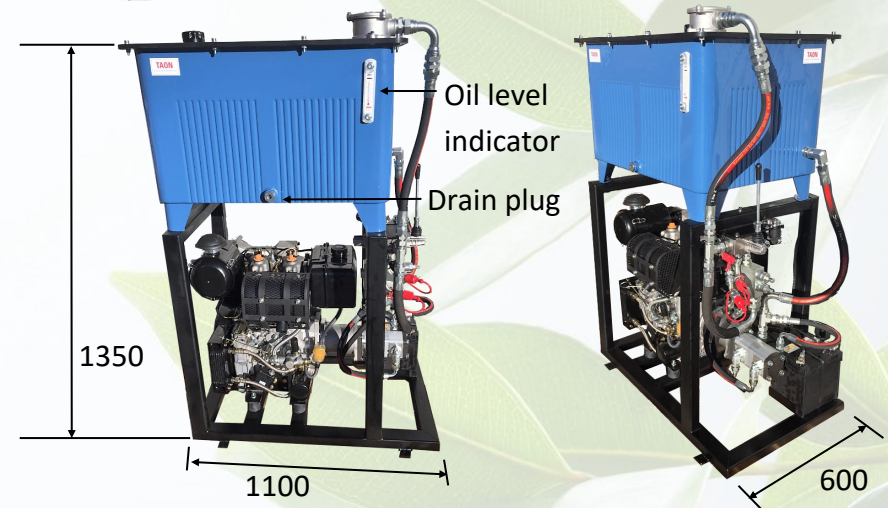


DP19-02 Diesel Powered Hydraulic Unit



This Hydraulic Power Unit comes with a double pump at 11+11 cm³ with high/low function.

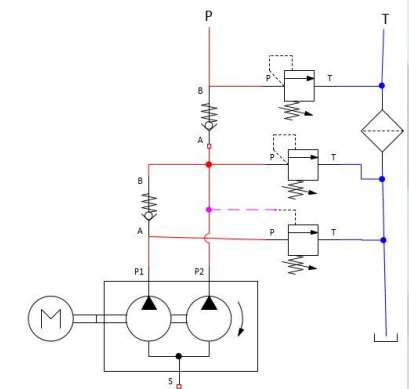
Flow at 0-100 bar - 66 L/min

Flow at 100-200 bar - 33 L/min.

Hydraulic Circuit

P = 1/2" - ISO 7241-1A

T = 1/2" - ISO 7241-1A



MOTOR

Power: 19 HP Diesel engine

PUMP & OIL TANK

Pump displacement: 11+11 cc/rev

Tank Capacity: 160 liter square tank

Returnfilter 10 µm

MAX. PRESSURE

P: 200 bar

FLOW

66,0 L/min