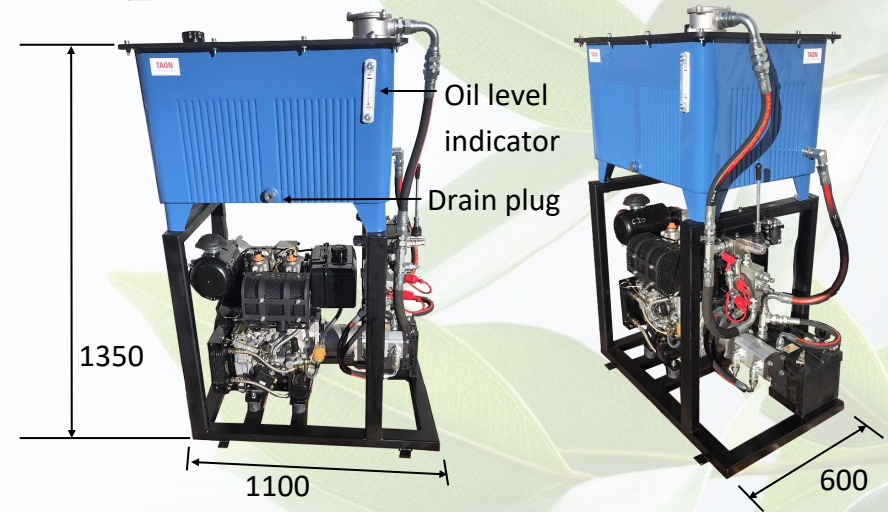


DP19-01 Diesel Powered Hydraulic Unit



This Hydraulic Power Unit comes with a double pump at 8+19 cm³ with high/low function.

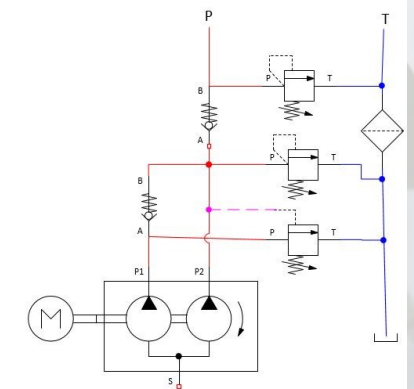
Flow at 0-80 bar - 82 L/min

Flow at 80-250 bar - 27 L/min.

Hydraulic Circuit

P = 1/2" - ISO 7241-1A

T = 1/2" - ISO 7241-1A



MOTOR

Power: 19 HP Diesel engine

PUMP & OIL TANK

Pump displacement: 8+19 cc/rev

Tank Capacity: 160 liter square tank

Returnfilter 10 µm

MAX. PRESSURE

P: 250 bar

FLOW

82,0 L/min